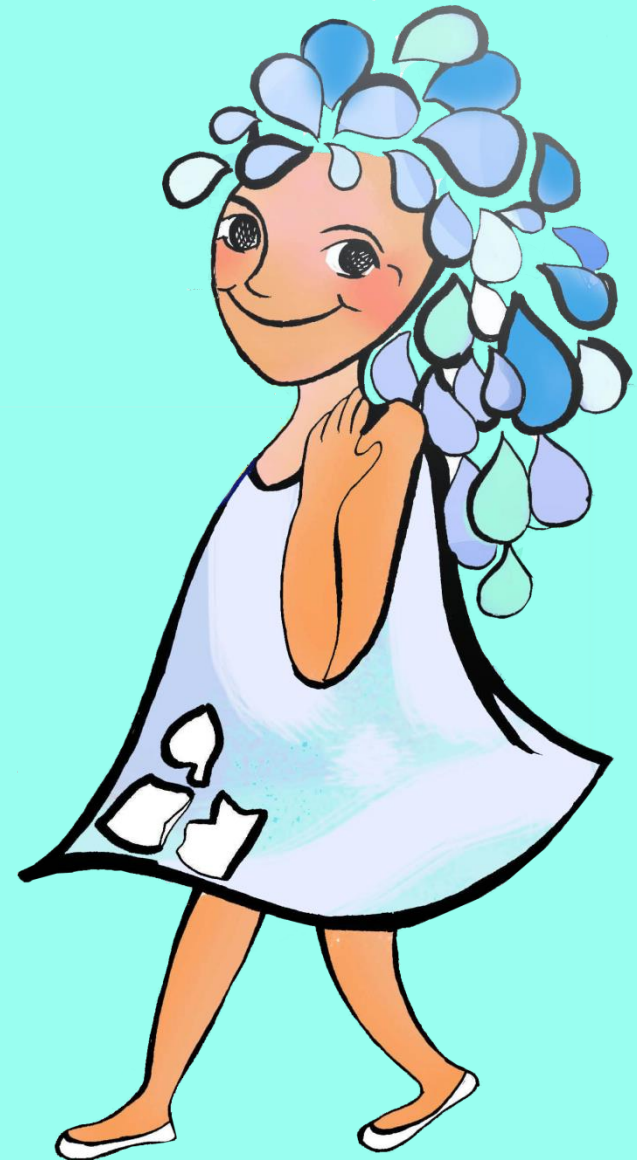


QUIZ

ŠLJUNČICA

Central wastewater
treatment plant in Zagreb



1. How we get wastewater?

a) By taking a shower

b) It emerges from the depths of the earth.

c) By rainfall on lawns in the park.



2. The sewage is?

a) Trenching on city streets.

b) The system pipes leading the wastewater from houses and flats.

c) Old Roman building.



3. Once before the water from Zagreb sewage went:

a) In the river Krapina

b) In the river Sava



4. When was the sewage system connected to the wastewater treatment plant in Zagreb?

a) In 2002.

b) In 2004.

c) In 2006.



5. What means the mechanical treatment of waste water?

a) Removing the sludge from the water.

b) Insertion of chlorine in to the water.

c) Removing all things bigger than 10 cm with a large rake



6. Why are the fat and sand removed from the waste water?

a) So that the workers do not get dirty at work

b) That the water is ready for drinking

c) So they do not damage the pipes



7. What is a digester?

a) Sliding door on the entrance

b) Concrete tank, where sludge and sewage by bacteria develop the methane gas.

c) Shovel for extracting sludge.



8. What purifies the water in the biological pool?

a) Chemicals

b) Bacteria

c) Machine



9. How can we destroy the bacteria in the remain sludge?

a) With baking soda

b) With salt

c) With quicklime



10. How can we use the remain sludge from the biological pool?

a) To create curb and brick for paving the roads

b) For filling the holes on the roads

c) To make fertilizer for plants



11. Wich purification level is the water that enters the river Sava after the purifier?

a) 1. level

b) 3. level

c) 2. level



12. What means the 2. level of purification?

a) We can bath in that water

b) We can drink that water

c) We can't bath in that water

